

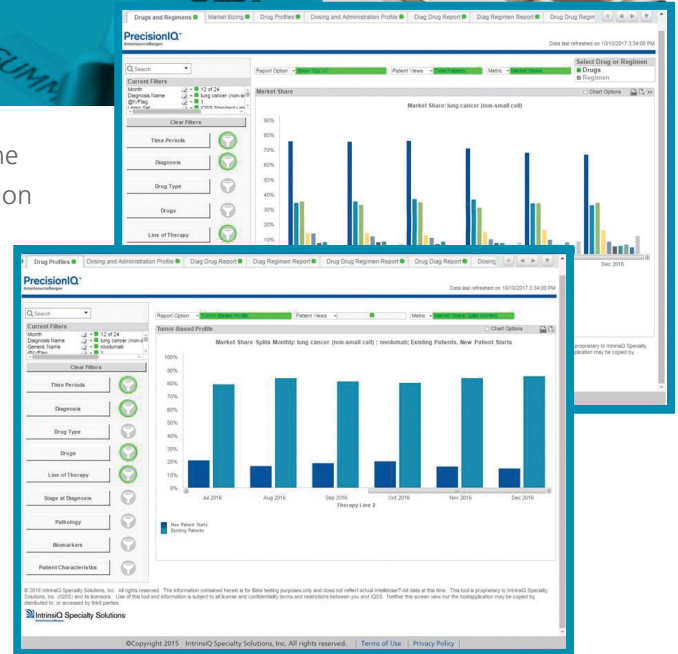
DRUG UTILIZATION AND PROFILING

PrecisionIQ™

Strengthen Your Knowledge
of Oncology Drug Utilization

Understanding drug treatment trends and market dynamics is key to the success of your product. With the actionable, market-specific information from PrecisionIQ™, you will have quick access to the insights you need to help answer key business questions and to provide you with an increased competitive advantage within your market.

PrecisionIQ's enhanced projection methodology is based off of real-world clinical usage data and national epidemiology information and provides authorized users with access to projected US patient utilization insights. This information can be filtered by diagnosis, stage and other detailed patient characteristics. This allows you to quickly and easily view current market trends and assess challenges and opportunities for your brand in specific market segments that are relevant to your business.



Key Insights

- Utilize projected US market level reporting that is based on broad and disparate data assets. This allows you to access information on 80+ malignancies and related attributes to **understand market shares at a drug or regimen level**
- Leverage robust and detailed national patient-level projections with historical longitudinal drug use trends to accurately **see how cancer patients are treated at the tumor level**, by line of therapy and other relevant segments
- Run targeted queries and retrieve customized reports with an easy-to-use interactive business intelligence tool designed to **quickly answer key business questions** based on real-world market scenarios
- Access enhanced analyses and greater insights based on a **user-friendly interface** with visually appealing charts and graphs
- Analyze total and potential patient populations and **evaluate patterns in drug dosing and administration**